

CLEARWATER COUNTY COUNCIL AGENDA

March 22, 2016

9:00 A.M.

Council Chambers

4340 – 47 Avenue, Rocky Mountain House, AB

9:05 A.M. Delegation: Derry Armstrong, Armstrong Consulting Services – Nordegg and Area Trail System

9:45 A.M. Delegation: Caroline Legion #177 – Grant Request

10:30 A.M. Delegation: Chris Montgomery, Manager of E&P Communications, and Cam Sorenson – Canadian Association of Petroleum Producers

A. CALL TO ORDER

B. AGENDA ADOPTION

C. CONFIRMATION OF MINUTES

1. March 08, 2016 Regular Meeting Minutes

D. PLANNING

1. 9:05 A.M. Delegation: Derry Armstrong, Armstrong Consulting Services – Nordegg and Area Trail System

E. COMMUNITY & PROTECTIVE SERVICES

1. 9:45 A.M. Delegation: Caroline Legion #177 – Grant Request

F. CORPORATE SERVICES

1. Clearwater County Technology and Information Management Systems (TIMS) Update – *VERBAL REPORT*

G. MUNICIPAL

1. Tri-Council Meeting Date
2. 10:30 A.M. Delegation: Chris Montgomery, Manager of E&P Communications, and Cam Sorenson– Canadian Association of Petroleum Producers (CAPP)

H. INFORMATION

1. CAO's Report
2. Public Works Director's Report
3. Councillor's Verbal Report
4. Accounts Payable Listing

I. IN CAMERA*

1. Third Party Interest – CAPP
2. BR2 Architecture

* For discussions relating to and in accordance with: a) the Municipal Government Act, Section 197(2) and b) the Freedom of Information and Protection of Privacy Act, Sections 21(1)(ii); 24(1)(a)(c) and (g); 25(1)(c)(iii); and 27(1)(a)

J. ADJOURNMENT



AGENDA ITEM

PROJECT: Nordegg & Area – Trail System		
PRESENTATION DATE: March 22, 2016		
DEPARTMENT: Planning & West Country	WRITTEN BY: Rick Emmons	REVIEWED BY: Ron Leaf
BUDGET IMPLICATION: <input checked="" type="checkbox"/> N/A <input type="checkbox"/> Funded by Dept. <input type="checkbox"/> Reallocation		
LEGISLATIVE DIRECTION: <input type="checkbox"/> None <input type="checkbox"/> Provincial Legislation (cite) <input type="checkbox"/> County Bylaw or Policy (cite)		
STRATEGIC PLAN THEME: Managing our Growth	PRIORITY AREA: 1.3 Local Economy	STRATEGIES: 1.3.6 Develop and market the community of Nordegg, as financial resources permit and in accordance with the Nordegg Development Plan and Design Guidelines
ATTACHMENT(S): PowerPoint Presentation, Trail Plan		
RECOMMENDATION: For Council to review the information and approve the trail plan as presented by Administration.		

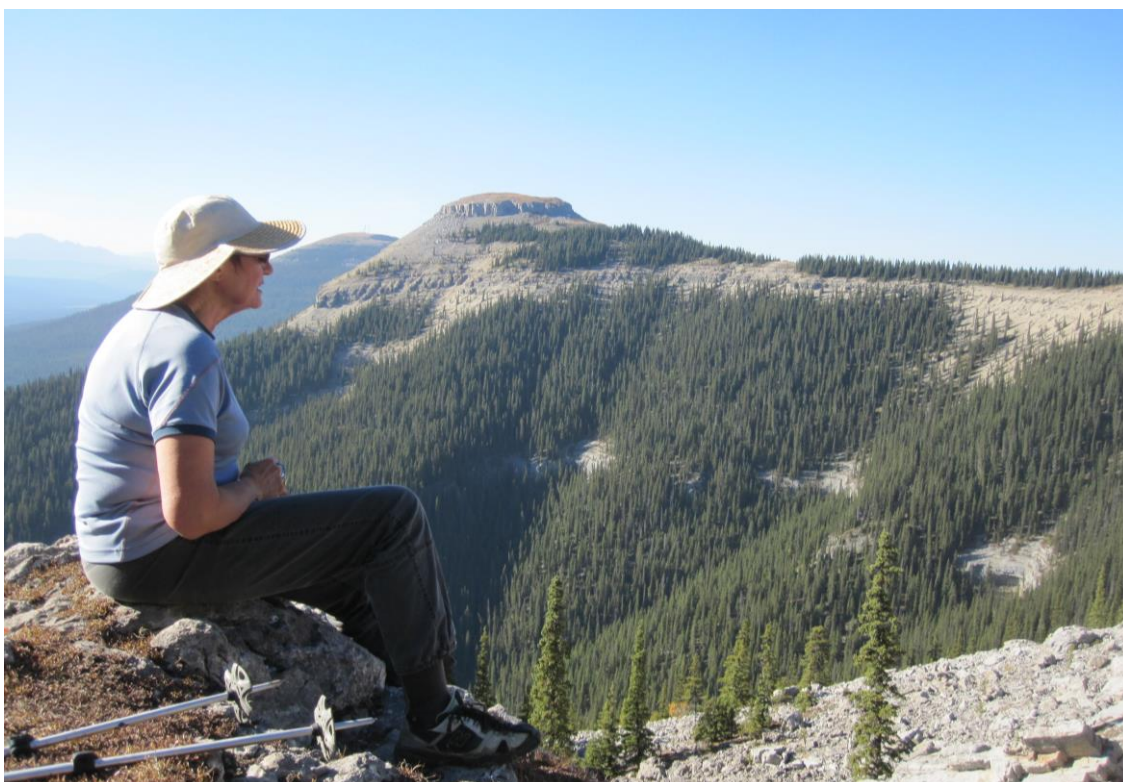
BACKGROUND:

Administration has been working on the concept planning in regards to motorized and non-motorized trail systems in the Nordegg area. With the public consultation now completed, Administration is presenting those results along with Administration's recommendations for Council's endorsement. The attached PowerPoint is intended to inform Council and subsequently, if Council has any concerns, to inform Administration.

Trusting the information presented meets with Council's approval, it is Administration's recommendation to adopt the trail plan as presented.

NORDEGG TRAIL PLAN CLEARWATER COUNTY

February 2016



**ARMSTRONG
CONSULTING SERVICES**



Table of Contents

1	Introduction	1
1.1	Background Planning Directions	1
1.2	Existing Trail Conditions	2
1.3	Public Involvement	3
2	Future Trails	4
2.1	Vision Statement	4
2.2	Objectives.....	4
2.3	Trail Types and Locations.....	4
2.3.1	Multi Use Trails	4
2.3.2	Non-Motorized Trails	4
2.3.3	OHV Use of Roads In North Subdivision	5
2.3.4	OHV Use of Roads in South Nordegg	5
2.3.5	Trails to Historic Site	5
2.3.6	Staging Areas	6
3	Trail Development Standards	7
3.1	Primary Multi Use Trails.....	7
3.2	Secondary Multi Use Trails.....	8
3.3	Non-Motorized Trails	9
3.4	Sidewalks and Pathways in New Developments	10
3.5	Historic Trestles.....	10
3.6	Trail Furnishings	10
3.7	Highway Crossings.....	11
3.8	Staging Areas Design	11
3.9	Regional Trail Connections.....	12
3.10	Trail Information and Signs.....	12
4	Implementation	13
4.1	Compliance and Enforcement	13
4.2	Trail Maintenance.....	13
	Appendix	14
	Map 1 – Existing Trails.....	14
	Map 2 – Future Trails	15

1 Introduction

In 2014, Clearwater County initiated a trail planning process for Nordegg to direct development of future trails within the Hamlet boundaries. MPE Engineering and Armstrong Consulting Services were retained to lead the planning process.

The Nordegg Trail Plan proposes development of an internal trail system for use by residents of Nordegg and visitors from across Alberta. The trails will provide linkages to facilities and attractions within Nordegg, and connections to the Rocky-Nordegg Rail Trail and other regional trails in the surrounding Bighorn Backcountry.

1.1 Background Planning Directions

Trail planning for Nordegg must consider ongoing development of the Hamlet, as well as trail management of the surrounding region by the Alberta Government.

The *Nordegg Development Plan* has provided long-term direction on the modern development of Nordegg since 2000. The stated Vision for the Nordegg Community is "striving to be a unique family friendly, four season community which maintains consistency with its historic legacy and natural mountainous setting....".

Policies throughout the *Nordegg Development Plan* support and encourage a connected trail system for the Hamlet (North and South).

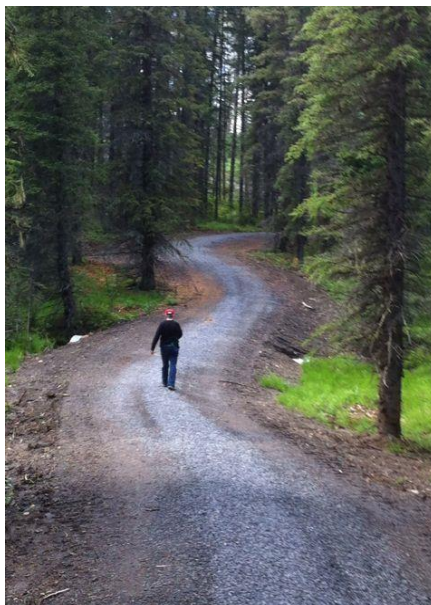
The most recent developments within Nordegg are the leisure residential lots in the North Subdivision and the residential lots within the Historic Town Centre. Both of these developments include recreational trails and opportunities for more trails.

Recreational trails are also a popular attraction in the Bighorn Backcountry that surrounds Nordegg. Several major trails start near Nordegg including the Coliseum Mountain Trail and trail complexes around Baldy Mountain and on Eagle Ridge south of the Hamlet.

The Government of Alberta regulates the type of trail uses permitted on public lands surrounding Nordegg. The Provincial regulations allow motorized trails for Off Highway Vehicles (OHV) on Eagle Ridge south Nordegg and around Baldy Mountain. However, only non-motorized trails are permitted on Coliseum Mountain, Shunda Creek Meadows and west towards Fish Lakes and Goldeye Provincial Recreation Areas.

Clearwater County, in cooperation with the Province of Alberta, has started redevelopment of the historic rail line from Nordegg to Rocky Mountain House as a recreation trail. The Rail Trail is designed for multiple recreational trail uses, both motorized and non-motorized. A section of the Rail Trail is constructed adjacent to Nordegg and connects to a new staging area along the Forestry Trunk Road (Hwy 734) west of the Town Centre. The new

trail continues eastward to Beaverdam Provincial Recreation Area. In future years, the trail is to be extended to Saunders and eventually to Rocky Mountain House.



Rail Trail

1.2 Existing Trail Conditions

Formal and informal trails are well established within Nordegg (See Map 1 – Existing Trails in Appendix).

A network of informal OHV trails leads southwards from the Town Centre to the Rail Trail and up onto Eagle Ridge. West of the Community Centre, a series of trails follow the ridges beside Long and Carp Lakes. A heavily used OHV trail leads from the intersection of Highway 11-Shunda Creek Road towards Stuart Avenue providing a trail linkage to the North Subdivision.

In the North Subdivision, a myriad of OHV trails are located east of the Shunda Creek Campground and south of the Old Timers Campground. Several non-motorized trails cross the meadows south of the Shunda Creek Hostel and lead over to Shunda Creek Road. A non-motorized trail exists between the subdivision lots on Raven Rise and Ptarmigan Road.

The very popular Coliseum Mountain Trail (non-motorized) starts adjacent to the North Subdivision and heads up onto Coliseum Mountain.

Most of the informal trails are not maintained and some of the trails have safety issues (e.g., blind intersections), erosion on slopes, poor drainage, and numerous downed trees.



Informal OHV Trail

1.3 Public Involvement

The preparation of this Trail Plan was guided by interviews with several trail users within the community. The trail users included local people who ride quads, snowmobiles and motorcycles, as well as walkers, hikers, cross-country skiers and snow-shoers. The interviews with trail users identified numerous comments and suggestions for consideration in the Draft Trail Plan.

A Draft Trail Plan was presented to the community for comment in August 2015. A copy of the plan was posted on the County Website and people were invited to review the plan and submit comments via an online questionnaire. A display on the Trail Plan was available for review and discussion with personnel at the August 4, 2015 Pancake Breakfast.

Community feedback was generally very supportive of the directions outlined in the Trail Plan. However, the Plan was revised in consideration of some of the public input.

2 Future Trails

The following Vision Statement will guide development of trails within Nordegg:

2.1 Vision Statement

“A managed and sustainable trail system for all trail users that links our community, provides recreational enjoyment, economic benefits, and celebrates the history and beauty of the Brazeau Mountains.”

A primary role of the trail plan is managing existing, informal trail use in a safe and sustainable manner.

2.2 Objectives

Key objectives of the Nordegg Trail Plan are:

- Promote sustainable recreation and tourism in the region,
- Promote safe and responsible use of trails,
- Provide connections within the local community to existing and new recreation facilities, heritage sites and commercial services,
- Provide links to existing and future regional trails adjacent to the Hamlet.

2.3 Trail Types and Locations

The trail system proposed for Nordegg provides internal linkages to community attractions and services, connections to surrounding regional trails and formalizes many of the existing trails within the community.

Map 2 – Future Trails (see Appendix) outlines the trail system proposed for Nordegg. Two types of trails are proposed including:

2.3.1 Multi Use Trails

- Trails that accommodate a range of activities including motorized OHVs (quads, snowmobiles, motorcycles), as well as non-motorized users (pedestrians, cyclists, cross-country skiing, snow shoeing, equestrian),
- Larger motorized vehicles (e.g., trucks, jeeps) will not be allowed,
- Trail sharing and etiquette will be emphasized.

2.3.2 Non-Motorized Trails

- Trails where only non-motorized uses (pedestrians, bicyclists, cross-country skiing, snowshoeing, equestrian) will be allowed.

2.3.3 OHV Use of Roads In North Subdivision

- OHVs may continue to use roads within the North Subdivision in order to access surrounding regional trails,
- OHVs on roads must be operated in accordance with Provincial legislation and Clearwater County's OHV By-law.
- Riders must adhere to all traffic regulations (e.g., speed limits, noise levels).
- OHV safety and etiquette signs will be installed along entrance roads in the North Subdivision.

2.3.4 OHV Use of Roads in South Nordegg

- OHVs will not be allowed to use roads within South Nordegg (e.g., Stuart Avenue, Quarry Road, Historic Town Centre) due to safety concerns.
- A system of Multi Use Trails will be built within South Nordegg to provide OHV access to Commercial Services and links to surrounding trails.
- OHVs may use gravel lanes and alleys within South Nordegg only to connect to designated Multi Use Trails.
- The restriction of OHVs on roads will not take place until Multi Use Trails are in operation.
- A major public awareness and compliance program will be implemented as the new trails come into service.

2.3.5 Trails to Historic Site

At present, access to the Historic Site for guided mine tours is by vehicle only. No trails are proposed to access the Historic Site at this time. In future, pedestrian access to the Historic Site via the original rail line corridor may be considered.

The Rail Trail adjacent to the Historic Site provides a viewpoint overlooking the Historic Site. Interpretive information about the mine site will be installed at the viewpoint.



Historic Buildings

2.3.6 Staging Areas

Trail staging areas act as the formal starting point for trail systems and are especially important to tourists visiting Nordegg to access trails. The staging areas are good locations to provide detailed trail information to users, especially visitors.

Trail staging areas will be built or maintained as follows:

- Rail Trail Staging Area (existing),
- Coliseum Mountain Trail Staging Area (existing),
- Baldy Mountain Trail Staging Area (new).

The new Baldy Mountain Staging Area will be placed along the Forestry Trunk Road (Hwy 734) to make it easier for tourists to find and reduce traffic within the North Subdivision. The Staging Area will be designed to accommodate OHV use and provide an access point for multi use trails around Baldy Mountain.

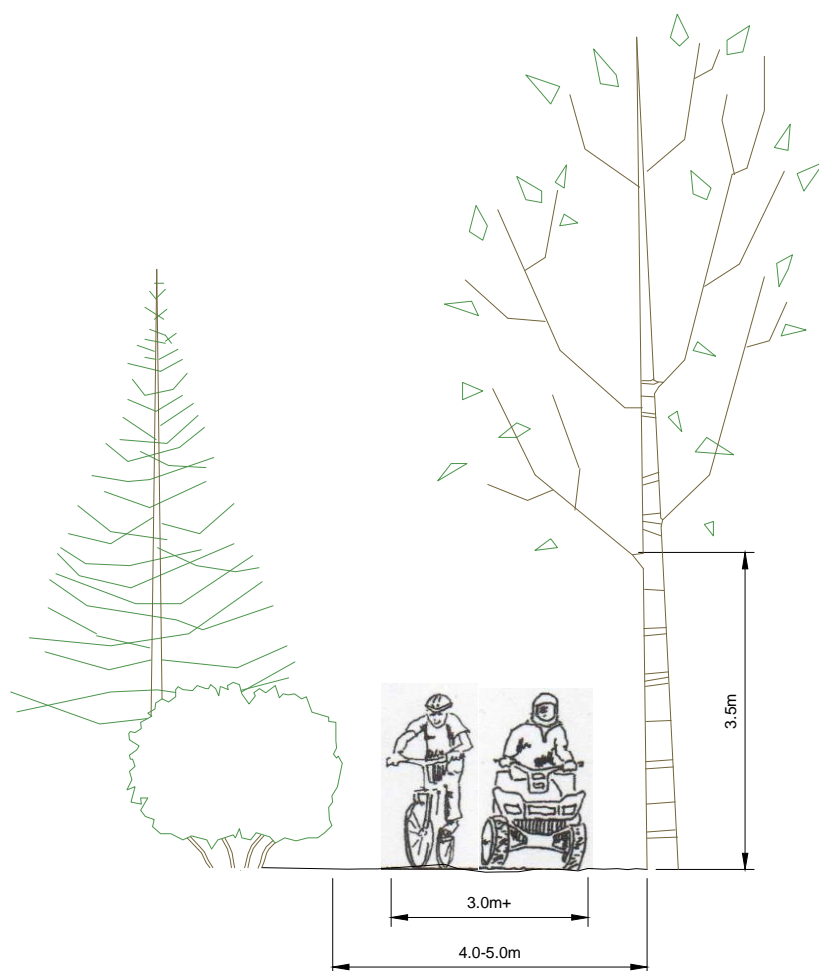
The existing informal access to the Baldy Mountain trails along the Baldy Mountain Road will be left as is with no further improvements.

3 Trail Development Standards

3.1 Primary Multi Use Trails

The Primary Multi Use trails provide key linkages within the trail system by connecting to community facilities and surrounding regional trails. The primary trails will be constructed to accommodate both motorized and non-motorized users in a safe and sustainable manner.

- Base material will be placed to provide a raised surface that will drain properly and sustain trail traffic,
- Surface – granular material will be compacted to provide a surface that is suitable for all users,
- Tread Width – 3 metres,
- Clearing Width – 4 to 5 metres,
- Clearing Height – 3.5 metres,
- Gradient – up to 20%.
- Signs will be placed at all trail entrance to encourage trail sharing among different types of users (motorized and non-motorized).

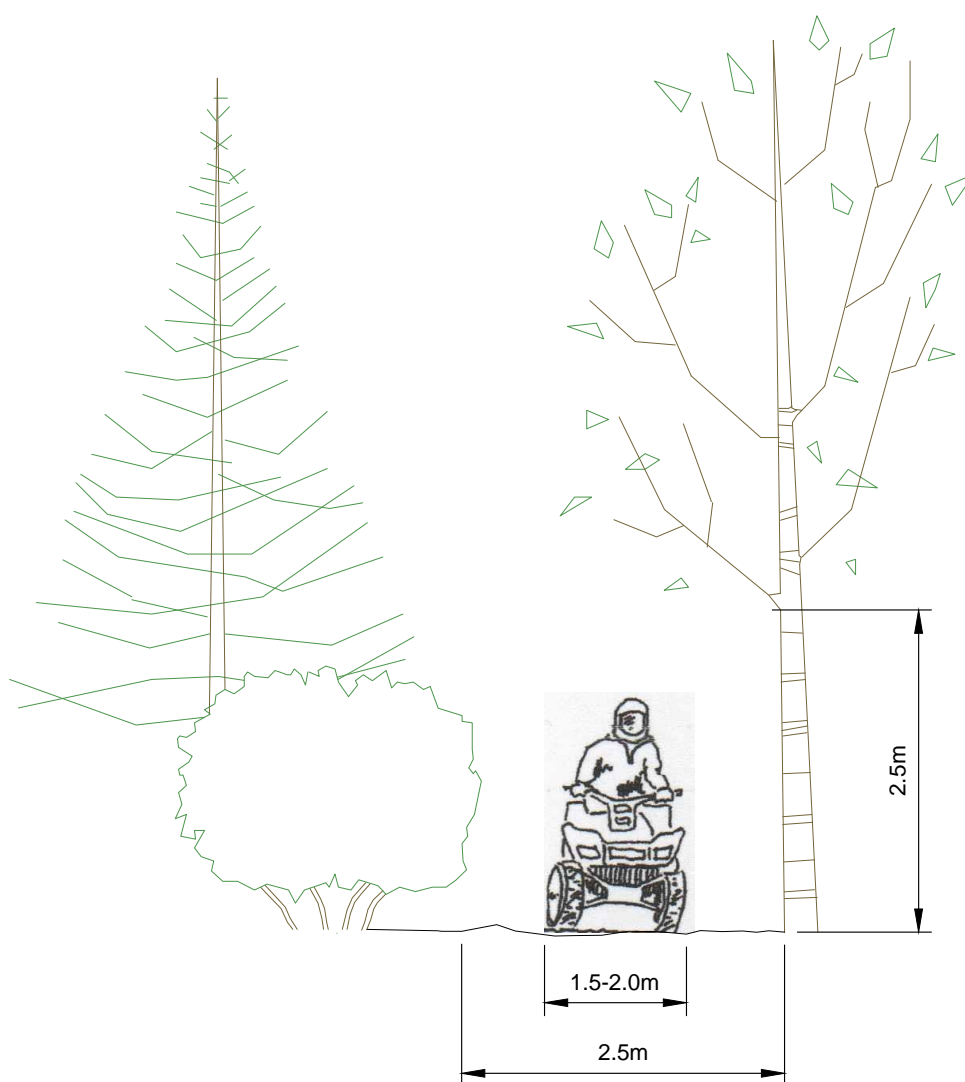


Sketch: Primary Multi Use

3.2 Secondary Multi Use Trails

Secondary Multi Use trails will include many of the existing OHV trails that are popular for continued motorized and non-motorized uses. Trails that can be maintained in a safe and sustainable manner will be kept open, but existing trails that are unsafe, poorly drained or eroding may be re-routed or closed.

- No base material will be placed, except in areas where the existing trails are wet or eroding,
- Surface – Natural materials,
- Tread Width – 1.5 to 2 metres,
- Clearing Width – 2.5 metres,
- Clearing Height – 2.5 metres,
- Gradient – up to 30%.
- Signs will be placed at all trail entrance to encourage trail sharing among different types of users (motorized and non-motorized).

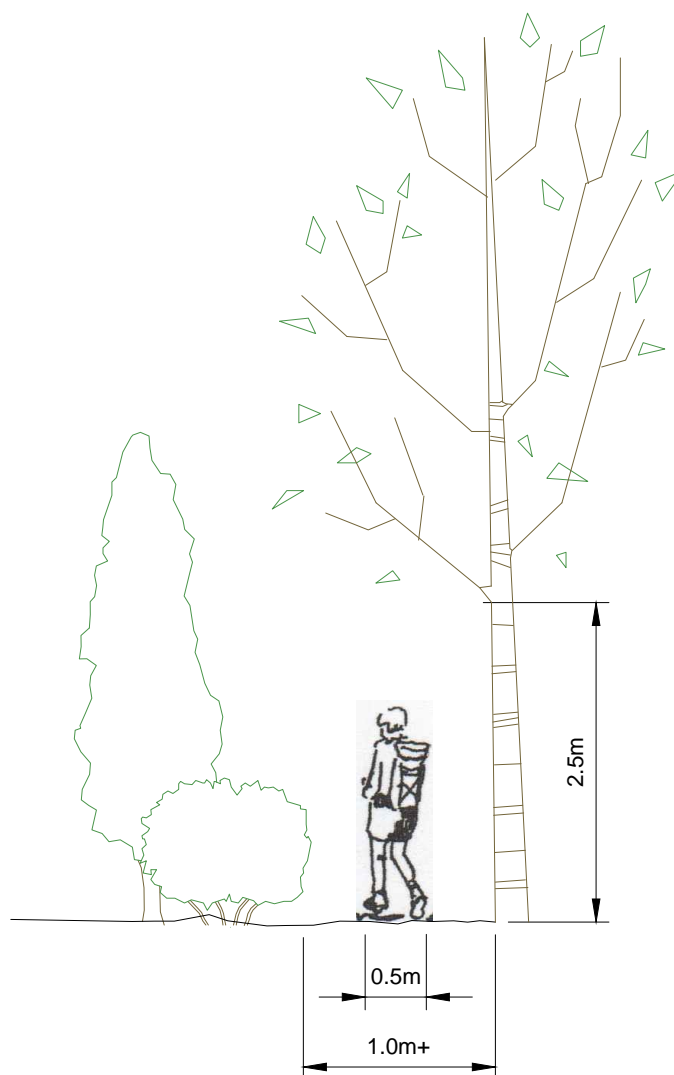


Sketch: Secondary Multi Use

3.3 Non-Motorized Trails

The system of Non-Motorized trails within Nordegg will provide access to community facilities, nearby neighbourhoods, viewpoints (e.g., lakes) and circle routes for strolling or exercise. The trail system will be designed to be as natural as possible and environmentally sustainable. Clearing for the trails will be kept very narrow to discourage access by OHV's.

- Surface – natural materials,
- Tread Width – 0.5 metre,
- Clearing Width – 1 metre. Hand-clearing only, minimal mechanical clearing,
- Clearing Height – 2.5 metres,
- Gradient – up to 30%,
- Grooming for cross-country skiing is permitted where the terrain is suitable.
- Barriers and regulation signs will be placed at all entrances to the Non-Motorized Trails to discourage use by OHV's.



Sketch: Non-Motor Use

3.4 Sidewalks and Pathways in New Developments

Plans for the Lower Stuart Street Area and the Historic Town Centre identify future opportunities for development of commercial services, resorts, and expanded residential subdivisions. Planning is conceptual at this time, with no specific details or site plans.

Sidewalks, boardwalks, pathways and trails will be included in future developments. As developments occur, detailed planning will direct the exact location and routing of trails. Connections and linkages to the broader community trail system and regional trails will be an important consideration in designing the new developments.

3.5 Historic Trestles

The three railroad trestles located along the rail line in Nordegg are a reminder of the importance of railroads to local history. The trestles will be evaluated to see if they could be kept as part of the trail system. Trail use of the trestles will be dependent on an engineering evaluation of the condition of the trestles and risk / liability considerations.

If the evaluation is negative for trail use, access to the trestles will be blocked.



Historic Trestle

3.6 Trail Furnishings

In general, trail furnishings will be limited along the Nordegg trails. Benches may be placed at viewpoints and rest locations. Waste receptacles may be placed at staging areas or major trail entry points, but trail users will be strongly encouraged to carry out their garbage. Bollards or barriers may be needed at some entry points to discourage motorized access to non-motorized trails.

The design of trail furnishings will conform to guidelines approved by Clearwater County in the document *Landmark Components* prepared by IBI Land Plan.



Lake Viewpoint

3.7 Highway Crossings

Along Highway 11, two trail crossings are proposed to provide connections between North and South Nordegg. The crossings will be on grade across the highway pavement. Safety is a key factor in the location and design of the crossings.

Crossings are planned near the intersections of Highway 11 with Shunda Creek Road and Pine Martin Road. The exact location and design of the crossings will be in accordance with Alberta Transportation requirements.

Caution signs along the highway are proposed, as well as safety signs on the trails. Emphasis will be placed on placement of safety signs to avoid any future accidents.

3.8 Staging Areas Design

The design and lay out of staging areas will be dependent on the type of trails accessed from the staging area (motorized or non-motorized). The parking lots for the Rail Trail and Baldy Mountain Staging Areas need to accommodate larger vehicles pulling trailer units. The parking lot for the Coliseum Staging Area is adequate for passenger vehicles, as it exists.

All staging areas will require a trail information kiosk, a toilet and waste receptacle.

Directional signs to Staging Areas will be placed along Highway 11 and on local roads as necessary.



Staging Area Kiosk

3.9 Regional Trail Connections

A primary role of Nordegg trails is to connect to surrounding regional trails to provide access to the surrounding Bighorn Backcountry.

Nordegg's Multi Use Trails will connect to the Rail Trail and trails on Eagle Ridge (south of Nordegg) and Baldy Mountain. The Non-Motorized Trails in Nordegg will connect to trails on Coliseum Mountain, in Shunda Creek Meadows and towards Fish Lakes.

3.10 Trail Information and Signs

The lack of accurate trail information is one of the major complaints about existing trails in Nordegg. Providing accurate trail information will be a priority for implementation. The following methods are proposed:

- Local maps and brochures (in cooperation with the Government of Alberta),
- Web site maps and trail descriptions,
- Community and Staging Area Signs,
- Regulatory signs,
- Share the trail signage,
- Way-finding markers on trails,
- Interpretive signs at key locations (e.g., trestles, Historic Site Viewpoint).

4 Implementation

Implementation of the Nordegg Trail Plan will take place in multiple phases as outlined in the following paragraphs.

The initial phase will improve the existing trails with more information / signage, expanding the Non-Motorized trails in the North Subdivision and designing the Primary Multi Use trail to connect North and South Nordegg.

The second phase starts construction of the Primary Multi Use trail to connect North and South Nordegg and continues expansion of the Non-Motorized trails.

The final phase completes construction of the Multi Use trail connecting North and South Nordegg, development of the Baldy Mountain Staging Area, redevelopment of the Historic Trestles, and continues building Non-Motorized trails in South Nordegg.

4.1 Compliance and Enforcement

The County Peace Officers will be the primary personnel that monitor compliance and enforcement of trail uses within the Hamlet of Nordegg. County Peace Officers will continue to work in close cooperation with other enforcement agencies like the RCMP, Alberta Sheriffs and Alberta Environment and Sustainable Resource Development to monitor trail use compliance.

Implementation of the Nordegg Trail Plan will place priority on a program of information and awareness of the rules controlling trail use within the Hamlet.

Major weekend awareness campaigns are proposed in the early summer as a means to improve trail use compliance. Officers would be present in the Hamlet to talk with trail users and explain trail rules. Over time, as the trail rules become known and trail activity increases, it is hoped compliance will not be a major problem.

The existing County OHV By-law will be reviewed to ensure it addresses the enforcement requirements needed to designate trail uses within Nordegg.

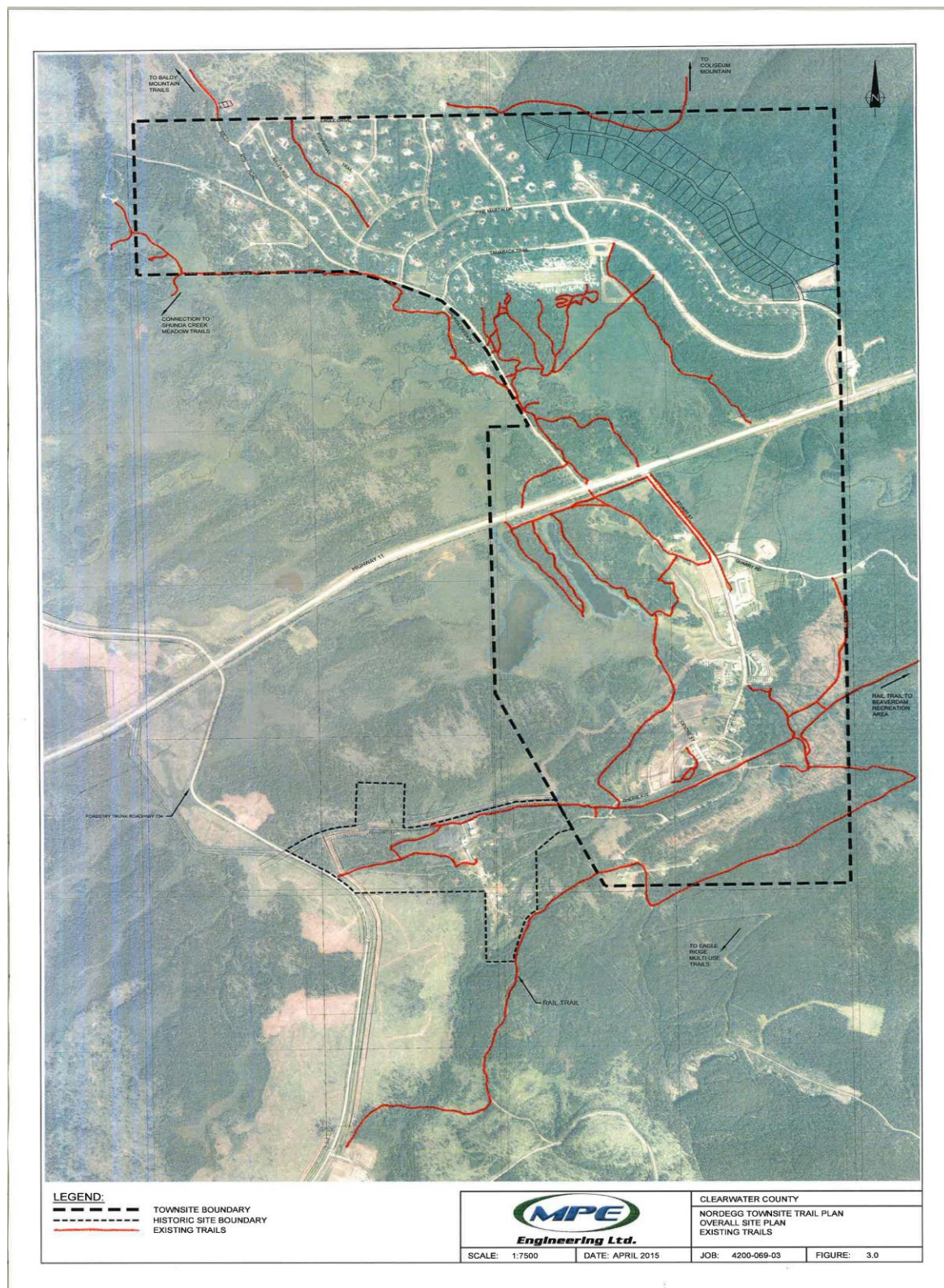
4.2 Trail Maintenance

Ongoing maintenance will be important to ensure that trails remain safe and environmentally sustainable. A combination of County and volunteer resources are proposed for maintenance. Cleaning of washrooms, emptying waste receptacles and major trail repairs due to flooding, erosion, ongoing wear and tear could be the responsibility of the County. Litter picking, cutting of fallen trees, and sign repairs may be suitable maintenance activities for volunteer trail stewards.

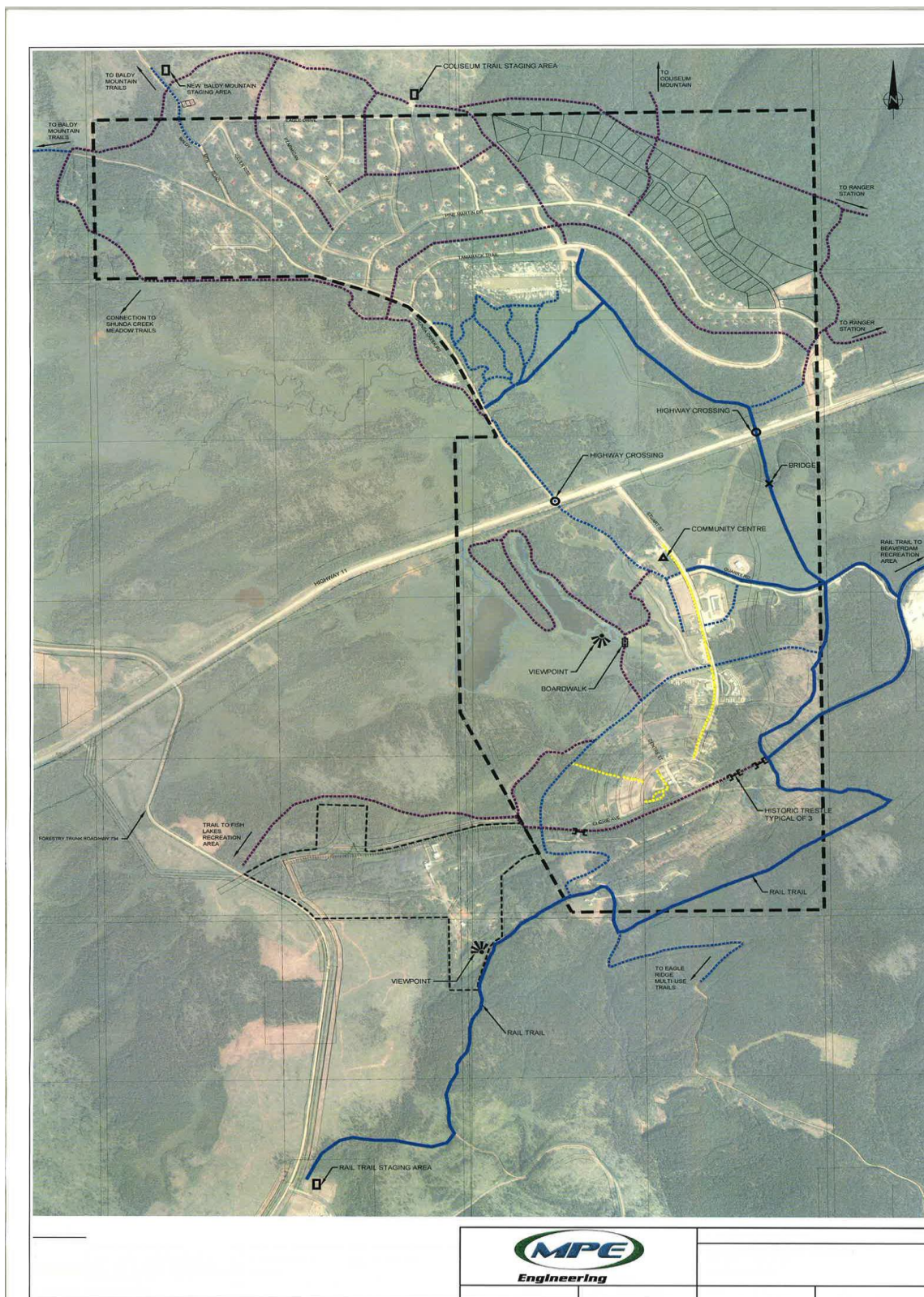
It is suggested the Nordegg Community Association be asked to coordinate trail volunteers with the County.

Appendix

Map 1 – Existing Trails



Map 2 – Future Trails



NORDEGG TRAIL PLAN IMPLEMENTATION
--

Phasing and Preliminary Cost Estimates

Phase 1- 2015	Cost Estimate
Trail regulatory signs at trailheads(60 signs @ \$150)	Complete
Trail way finding signs along trails(500 signs @ \$10)	Complete
Build Non-Motorized trails in North Subdivision (5 kms @ \$5,000)	Complete
Design concept for Primary Multi Use Trail & Shunda Ck bridge	Complete
Construct Primary Multi Use Trails in South (2 kms @ \$65,000)	In Progress
Phase 1 Subtotal	\$0

Phase 2- 2016

Improve Secondary Multi Use trails in N. Sub. (3 kms @ \$5,000)	\$15,000
Build Non-Motorized trails in North Subdivision (5 kms @ \$5,000)	\$25,000
Construct Primary Multi Use trails (2 kms @ \$65,000)	\$130,000
Construct Shunda Creek trail bridge	\$100,000
OHV By-law review	\$0
Trail information on County website	\$0
Trail map and brochure (design & print)	\$5,000
Trail use compliance campaign	\$0
Install toilet & waste receptacle at Coliseum SA (with ESRD)	\$19,000
Phase 2 Subtotal	\$294,000

NORDEGG TRAIL PLAN IMPLEMENTATION
--

Phase 3-2017

Construct Primary Multi Use trails (2 kms @ \$65,000)	\$130,000
Install trail crossing signs at highway (Shunda & Pine Martin)	\$4,000
Build Non-Motorized trails in South (5 kms @ \$5,000)	\$25,000
Build Secondary Multi Use trails in South (4kms @ \$10,000)	\$40,000
Update trail information & signs to reflect trail construction	\$3,000
Install furnishings on trails (waste receptacles, benches)	\$5,000
Trail use compliance campaign	\$0
Phase 3 Subtotal	\$207,000

Future Phases

Evaluate historic rail trestles for trail use	\$25,000
Redevelop historic rail trestles for trail use	\$100,000
Design & install interpretive signs for trestles	\$1,500
Design Baldy Mountain Staging Area	\$10,000
Construct Baldy Mountain Staging Area	\$100,000
Install highway direction signs to Baldy Mtn Staging Area	\$4,000
Future Phases Subtotal	\$240,500

Total \$741,500

Nordegg Trail Plan



- ✦ Council Presentation
- ✦ March 22, 2016

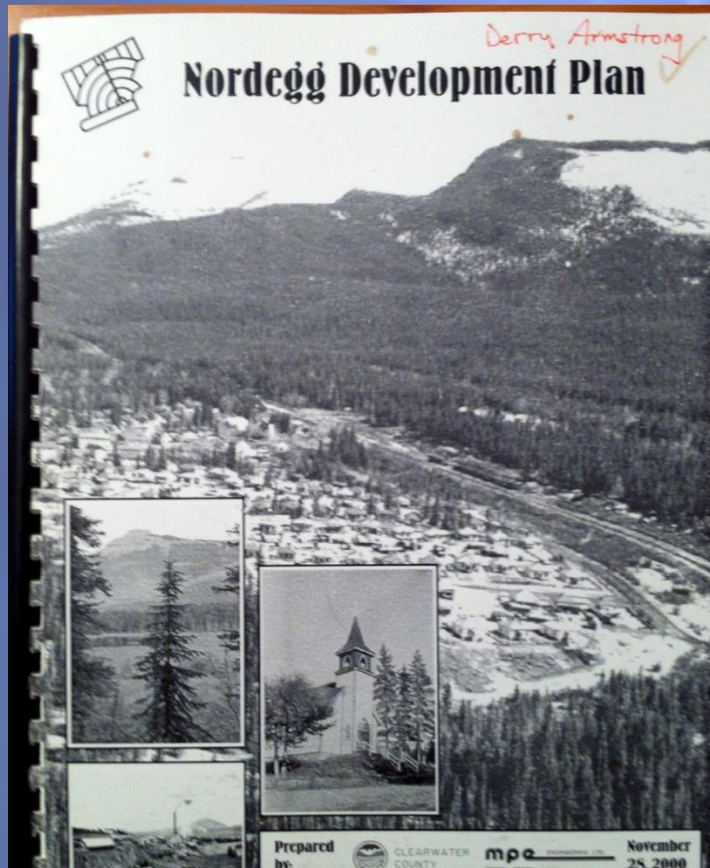
Purpose of Presentation

- ✦ Council approved release of draft Trail Plan for public feedback.
- ✦ Outline public feedback on directions proposed in Nordegg Trail Plan.
- ✦ Ask Council to adopt the Trail Plan as direction for implementation.

Importance of Trails

- ✦ Trails are a major recreation activity in Nordegg and surrounding Bighorn Backcountry.
- ✦ Attract tourists and residents to the area.
- ✦ Help diversify the local economy.
- ✦ Promote Nordegg as a commercial service centre.

Planning Directions



- ✦ Nordegg Development Plan strongly supports trails.

Proposed Nordegg Trails

- ✦ System of trails for internal links to community facilities and services.
- ✦ Trails that connect to regional trails on Coliseum Mountain, Baldy Mountain, and Eagle Ridge.

Proposed Nordegg Trails

- ✦ Multi Use Trails for motorized and non-motorized users. (11 kms).
- ✦ Non-Motorized Trails (14 kms).

Public Input Steps

- ✦ News Release.
- ✦ Website posting of plan and questionnaire.
- ✦ Newspaper article.
- ✦ Nordegg Squeak.
- ✦ Letters to landowners.
- ✦ Display at Pancake Breakfast.

Public Response

- ✦ Considerable public interest.
- ✦ Lots of hits on the website.
- ✦ Many people talked to staff at Pancake Breakfast.
- ✦ Good response to online questionnaire.

Comments Received

- ✦ Very strong support for the overall direction proposed in the Nordegg Trail Plan.

Multi Use trails for motorized and non-motorized.



- ✦ Supported, but concern with safety of highway crossings.

Non-Motorized Trails



- ✦ Support, but concerns with trails close to properties in North Subdivision.

OHV use of Roads in North Subdivision

- ✦ Agreed that current use is acceptable.
- ✦ Concerns about noise, safety and dust due to lack of enforcement.

Restrict OHV use of Roads in South Nordegg

- ✦ Support for restriction on roads.
- ✦ Need to build new trails to commercial services and surrounding trails.

Staging Areas



- ✦ Strong support to maintain Coliseum and Rail Trail Staging Areas.
- ✦ Support for building a new Baldy Mountain Staging Area in future.

Trail Information

- ✦ Strongest point of agreement.
- ✦ Need more trail information, maps and signs for Nordegg.

Compliance & Enforcement

- ✦ Strong support for increased level of trail compliance and enforcement.
- ✦ Emphasis on public awareness campaigns.

Implementation

- ✦ Proceed in phases
 - ✦ Phase 1- improve existing trails and information (in progress).
 - ✦ Phase 2- Construct major Multi Use trail to connect North & South.
 - ✦ Phase 3- Continue trail expansion and connections.
 - ✦ Future Phases- address historic trestles and new Baldy Mountain Staging Area.

Cost Estimates

- ✦ Phase 1- in progress.
- ✦ Phase 2- \$300,000.
- ✦ Phase 3- \$200,000.
- ✦ Future Phases- \$240,000



AGENDA ITEM

PROJECT: Caroline Legion #177 Grant Request		
PRESENTATION DATE: March 22, 2016		
DEPARTMENT: CCPS	WRITTEN BY: Jerry Pratt	REVIEWED BY: Ted Hickey/Ron Leaf
BUDGET IMPLICATION: <input type="checkbox"/> N/A <input checked="" type="checkbox"/> Funded by Dept. <input type="checkbox"/> Reallocation		
LEGISLATIVE DIRECTION: <input type="checkbox"/> None <input type="checkbox"/> Provincial Legislation (cite) <input checked="" type="checkbox"/> County Bylaw or Policy (cite) Bylaw: _____ Policy: Grant Funding for Community Halls, Associations & Non-profit Groups		
STRATEGIC PLAN THEME: 3. Community Well Being	PRIORITY AREA: 3.1 Sustain the recreation, cultural and quality of life needs of the community.	STRATEGIES: 3.1.2
ATTACHMENT(S): 1. 1. Caroline Legion financial statements		
RECOMMENDATION: 1) That Council provides direction on whether it wishes to consider the Caroline Legion request. 2) If Council agrees to accept the Caroline Legion request that the request be deferred until all anticipated requests have been presented.		

BACKGROUND:

The Caroline Legion has requested an opportunity to address Council. The delegation will be providing information regarding their request of \$24,209.90 through Council's 2016 Community Halls/Association Capital Grant. The funding is required to replace the building's roof, which has been damaged by water leakage.

Project expenses are estimated at \$26,709.90 with 2 quotes coming in for about the same amount.

The Caroline Legion has \$2,500 available to commit toward the project. The Legion approached a Government lottery fund but they do not qualify.

Council's Policy for Grant Funding for Community Halls, Associations & Non-profit Groups specifies that:

7. *The County should be viewed as a "funder of last resort". When applying for grant funding from Clearwater County, Community Hall Associations shall demonstrate that they have raised, or attempted to raise funds from other sources. Examples of funding sources that groups should consider using or applying for are, but not limited to:*
 - a. *funds from Hall revenues;*
 - b. *funds from provincial grants (e.g. Community Lottery Boards, Wildrose Foundation, Community Facility Enhancement Program (CFEP), etc.);*
 - c. *corporate donations, and;*
 - d. *donations from the community at large (donations may be either cash or gifts in kind, such as donated equipment, donated labour or services such as plumbers, carpenters, architects, etc.).*

8. *On approved projects the County will generally provide funding on a 50/50 cost share basis. Community Halls are expected to match County funds with cash, materials, labour, donated equipment, or other "gifts-in-kind". County funding will generally not exceed \$15,000.00 per project.*

As the Caroline Legion is not located within Clearwater County, staff are requesting Council's direction on whether Council wishes to consider the Caroline Legion request.

Given the recent Condor and Taimi Community Hall requests, and one pending, Administration recommends that Council defers its review of this request and other the community hall requests until they may be considered concurrently.

E1

TO: Jerry Pratt

THE ROYAL CANADIAN LEGION ALBERTA BRANCH #177

CAROLINE, ALBERTA

FINANCIAL STATEMENT

For the period ending December 31, 2015

Balance at December 31, 2014

\$ 5,687.65

REVENUE

Kitchen Income	\$ 31,559.65
Bar Income	14,640.10
Meat Draws	6,000.00
50/50 Raffle	3,773.55
Hall Rent	2,175.00
Regalia/Memorabilia	533.90
Membership	2,905.00
Memorial Room	40.00
Donations	500.00
Special Events	5,613.85
Transfers:	650.00
*from Donations Account	650.00
Miscellaneous:	<u>379.71</u>
*Co-op Rebate	320.21
*Overpayment of Spring Rally Fees	59.50

TOTAL REVENUE 2015

\$68,770.76

TOTAL REVENUE

\$74,458.41

EXPENSES

Bank Charges	\$ 316.65
Kitchen Expenses	19,005.94
Bar Supplies	8,651.01
Meat Draws	2,683.93
Hall Rent	250.00

Regalia/Memorabilia	1,700.04
Membership	2,626.71
Janitorial	3,813.07
Maintenance	2,425.02
Office Supplies	830.43
Health & Wellness	277.60
Advertising	522.80
Utilities	6,255.34
Phone	1,050.35
Memorial Room Supplies	350.46
Donations	1,522.00
Special Events	5,680.45
Transfers:	10.00
*to Seniors Account	10.00

Miscellaneous:	<u>4,086.40</u>
*Spring Rally Fees	99.50
*Property Taxes	424.90
*Property Insurance	3,047.00
*Liability Insurance	315.00
*Remembrance Flag	200.00

TOTAL EXPENSES 2015 \$62,008.20

BANK BALANCE AT DECEMBER 31, 2015 \$12,450.21

Actual: Revenue – Expenses \$12,450.21

Difference \$.00

CURRENT ASSETS

Bank Balances at December 31, 2015

Building Account	\$ 34,235.15
Donations Account	\$ 3,044.40
Seniors Account	\$ 1,010.00
General Operating Account	\$ 12,450.21
Nevada Account	<u>\$ 3,213.90</u>

TOTAL CURRENT ASSETS \$53,953.66

P. 5. Our auditor, Ella Norgaard, did a review of our books + reported that she found no errors.

Helen Williger



AGENDA ITEM

PROJECT: Tri-Council Meeting Date		
PRESENTATION DATE: March 22, 1016		
DEPARTMENT: Municipal	WRITTEN BY: Ron Leaf	REVIEWED BY: Ron Leaf
BUDGET IMPLICATION: <input checked="" type="checkbox"/> N/A <input type="checkbox"/> Funded by Dept. <input type="checkbox"/> Reallocation		
LEGISLATIVE DIRECTION: <input checked="" type="checkbox"/> None <input type="checkbox"/> Provincial Legislation (cite) <input type="checkbox"/> County Bylaw or Policy (cite)		
STRATEGIC PLAN THEME: Well Governed and Leading Organization	PRIORITY AREA:	STRATEGIES:
RECOMMENDATION: That councilors confirm availability for a June Tri-Council Meeting.		

BACKGROUND:

I wish to confirm with councillors their availability on either June 16 or June 17 for a Tri-Council meeting.

The Tri-Council agenda will be finalized through the ICC and it is anticipated that the agenda will be circulated the week of June 6.



AGENDA ITEM

PROJECT: Canadian Association of Petroleum Producers		
PRESENTATION DATE: March 22, 1016		
DEPARTMENT: Municipal	WRITTEN BY: Ron Leaf	REVIEWED BY: Ron Leaf
BUDGET IMPLICATION: <input checked="" type="checkbox"/> N/A <input type="checkbox"/> Funded by Dept. <input type="checkbox"/> Reallocation		
LEGISLATIVE DIRECTION: <input checked="" type="checkbox"/> None <input type="checkbox"/> Provincial Legislation (cite) <input type="checkbox"/> County Bylaw or Policy (cite)		
STRATEGIC PLAN THEME: Well Governed and Leading Organization	PRIORITY AREA:	STRATEGIES:
RECOMMENDATION: That Council receives the information as presented		

BACKGROUND:

The Canadian Association of Petroleum Producers (CAPP) have requested a delegation with Council. Mr. Cam Sorenson and Mr. Chris Montgomery from CAPP will attend Council and provide CAPP's perspective on the future of the oil & gas industry in Alberta and Canada. I understand that they also wish to discuss the impact of taxation, including municipal taxation, on the viability and competitiveness of the petroleum sector nationally and globally.

As background to the anticipated municipal taxation discussion, the following table outlines the Clearwater County municipal tax rates for residential ("Res") and non-residential mill rates and the associated ratio.

	Municipal Rate:		
	Non-Res	Res	Ratio
2013	0.0067618	0.0024557	2.753512
2014	0.0069139	0.002511	2.753445
2015	0.007467	0.0025612	2.91543